



Kristianstad
University
Sweden



LUND
UNIVERSITY

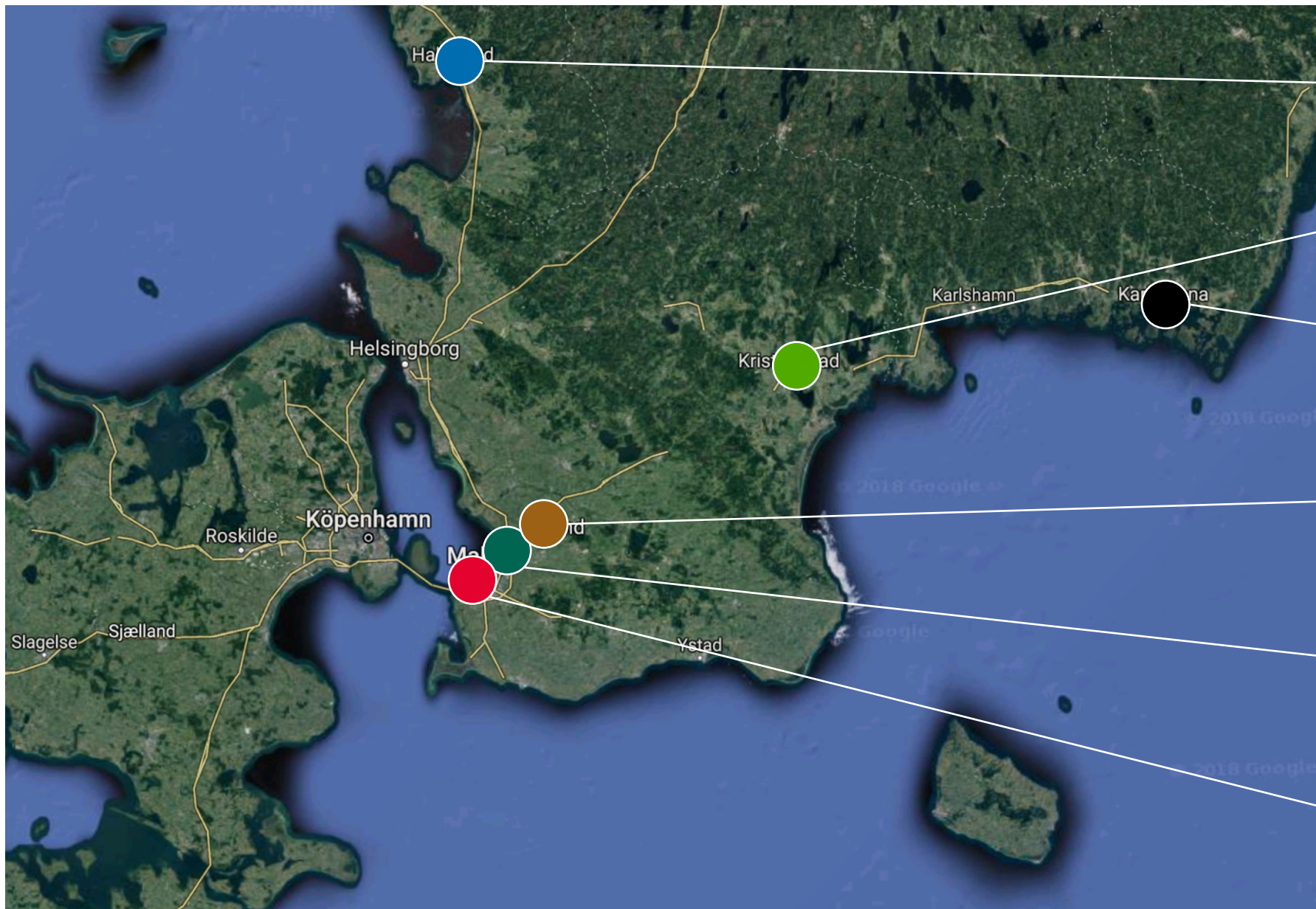


MALMÖ
UNIVERSITY



Lärosäten Syd
Universities in South Sweden





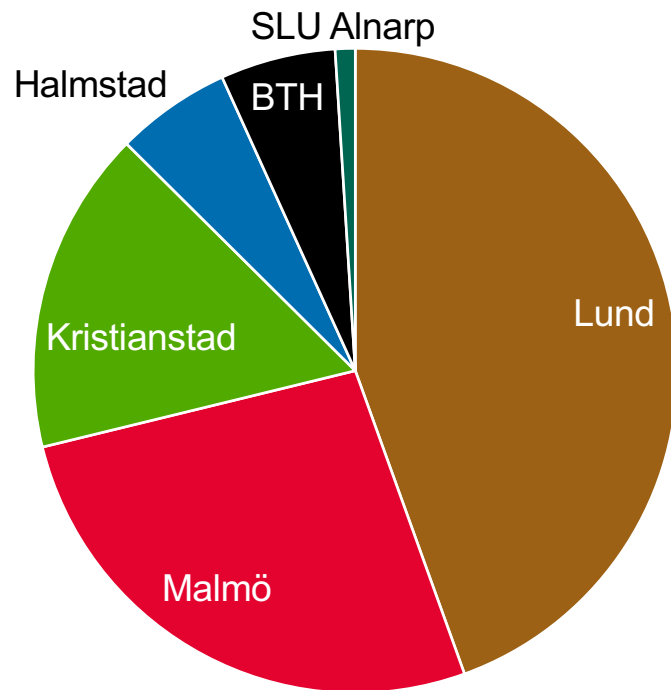
Lärosäten Syd

- Academic network since 2009 – unique in Sweden
- Increased mobility between universities
- Increased common planning and collaboration on education, PhD programmes, research, innovation, administrative functions and external engagement
- These collaborations provide increased quality, better utilisation of resources and improved contacts with industry and society, benefiting students and universities as well as society at large
- Shared Brussels office opened in 2018

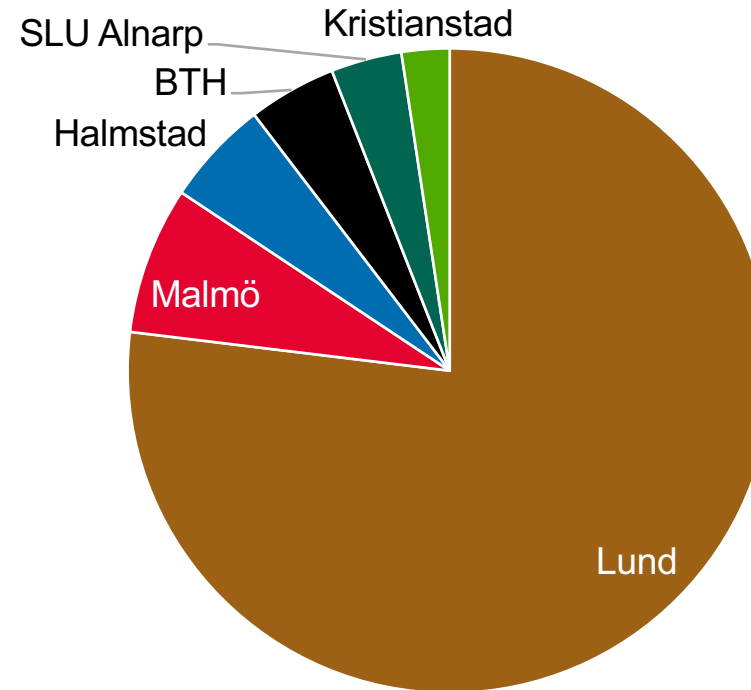


Lärosäten Syd: Education and research

90,000 students*



1,000+ professors



Lärosäten Syd account for 19% of all Horizon 2020 funding secured by Swedish HEIs

* Individual students, total over year



Blekinge Institute of Technology



- Small but focused. World leading within software engineering and sustainable development
- Faculties: Computing; Engineering
- Research focus: Applied research connected to the challenges society and industry are facing
- Research fields:
 - Applied signal processing
 - Computer science and engineering
 - Industrial economics and management
 - Mathematics and systems engineering
 - People, health and technology
 - Product development
 - Software engineering
 - Spatial planning
 - Strategic sustainable development
 - Media and communication technology
 - Telecommunication systems
 - Visual and interactive computing
- Ranked 1st in Europe and 6th in the world in software development research
- Horizon 2020 participation: 3 projects; €2,1 million
- Other European project participation: ERA-Net, COST, Interreg, Erasmus+ (strategic partnerships and capacity building)



Halmstad University



- Vision: Halmstad University prepares people for the future by creating values, driving innovation and developing society
- Schools
 - Business, Engineering and Science
 - Education, Humanities and Social Sciences
 - Health and Welfare
 - Information Technology
- Profile areas
 - Health Innovation
 - Smart Cities & Communities
- Research centres and groups
 - Center for Innovation, Entrepreneurship and Learning research
 - Research on Education and Learning
 - Center of research on Welfare, Health and Sport
 - Halmstad Embedded and Intelligent Systems research
 - The Rydberg Laboratory for Applied Sciences
- Horizon 2020 participation
 - 6 projects; €1,6 million



Kristianstad University

- Vision: A leading academic institution in selected fields of professional education, creating knowledge and skills for the future
 - Faculties
 - Business
 - Health Sciences
 - Natural Sciences
 - Teacher Education
 - Interdisciplinary Research Arenas
 - Collaboration for Business
- Development
 - Collaboration for Health
 - Collaboration for Learning
 - Man & Biosphere, Health
 - Food and Meals in Everyday Life
 - Research strengths: Health, Nutrition, Environmental studies
 - European project coordination:
 - COST, Interreg, Erasmus+
 - 6 active projects; €2,9 million



Lund University



- Vision: A world-class university that works to understand, explain and improve our world and the human condition
- One of Sweden's most successful Horizon 2020 participants
- Ranked among the world's top 100 universities
- Most popular study location in Sweden
- More international students than any other Swedish university
- Member of LERU and Universitas 21
- Horizon 2020 participation: 165 projects; €105 million
- Other European project participation:
 - EIT KICs, Erasmus+, COST, Interreg





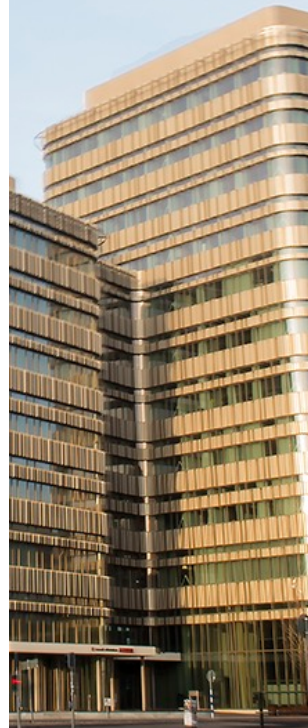
8 faculties, specialised centres, museums and cultural activities

- Economics & Management
- Engineering, LTH
- Fine & Performing Arts
- Humanities & Theology
- Law
- Medicine
- Science
- Social Sciences

Strong research areas

- Materials science, surface physics & nanotechnology
- Advanced laser physics and spectroscopy
- Diabetes
- Cancer
- Automatic control and complex systems
- IT and mobile communications
- Neuroscience & neuro-degenerative diseases
- Cognitive science
- Stem cell therapy
- Evolution, ecology & animal migration patterns
- Environment, climate, sustainable systems and biodiversity
- Epidemiology
- Innovation and entrepreneurship
- Middle Eastern studies

- Full research university status since 2018
- Vision: The University contributes to a sustainable and more equal society through research-based knowledge, critical reflection and readiness to act
- Faculties
 - Health & Society
 - Culture & Society
 - Education & Society
 - Technology & Society
 - Odontology
- Research centres
 - Biofilms Research Center for Biointerfaces
 - Centre for Sexology and Sexuality Studies
 - Centre for Work Life and Evaluation Studies
 - Internet of Things and People
 - Malmö Institute for Studies of Migration, Diversity and Welfare
- Member of International Network of Universities and SGroup
- Horizon 2020 participation
 - 10 projects; €2,2 million



Swedish University of Agricultural Sciences



- SLU – Science and Education for Sustainable Life
- Multi-campus university with regional presence across Sweden
- Faculties
 - Forest Sciences
 - Landscape Architecture, Horticulture and Crop Production Science
 - Natural Resources and Agricultural Sciences
 - Veterinary Medicine and Animal Science
- Research, teaching and environmental monitoring and assessment centered around the sustainable management and use of the biological natural resources, on land and in water
- Future platforms: To tackle complex challenges and to facilitate interdisciplinary and cross-sector collaboration, SLU has established: Future Food; Future Forests; Urban Futures; and Future Animals, Nature and Health
- SLU's knowledge, research and capacity development is instrumental to UN Agenda 2030 and the SDGs
- Latest addition to SLU's research infrastructure is Svea – one of the world's most modern ocean-going research vessels, ready in 2019.
- Among the top 10 universities in Plant & Animal Sciences and Agriculture & Forestry, and 9th among the world's best small universities
- Initiator of Global Challenges University Alliance and member of Euroleague for Life Sciences among others
- Horizon 2020 participation:
 - 47 projects; €18 million





MAX IV – We make the invisible visible

The MAX IV facility is the largest and most ambitious Swedish investment in research infrastructure and the brightest source of x-rays worldwide. It will receive more than 2,000 scientists annually from Sweden and the rest of the world.

Research takes place in areas such as materials science, structural biology, chemistry and nanotechnology.

MAX IV is located in Lund and hosted by Lund University.





ESS – European Spallation Source

ESS is one of the largest science and technology infrastructure projects being built today – a multidisciplinary scientific research centre with the world's most powerful neutron source.

ESS will be responsible for future research breakthroughs in medicine, environmental science, climate, communication and transport.

MAX IV and ESS will form a hub in the European research infrastructure, with the user programme opening in 2023.

Vice Chancellors of Lärosäten Syd



Mats Viberg, Blekinge Institute of Technology



Stephen Hwang, Halmstad University



Håkan Pihl, Kristianstad University



Torbjörn von Schantz, Lund University



Kerstin Tham, Malmö University



Peter Högberg, SLU

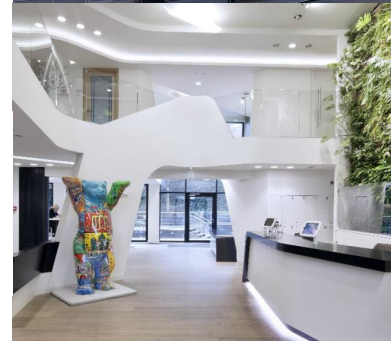


Lärosäten Syd Brussels Office

- Increasing the **profile** of our universities and researchers
- Creating deeper European **partnerships**
- Contributing positively to European **policy** development



Lärosäten Syd is a member of key Brussels research and innovation networks



Contacts at Lärosäten Syd

Interested in collaborating with us? Contact our research support offices

Blekinge Institute of Technology, Eva-Lisa Ahnström, eva-lisa.ahnstrom@bth.se

Halmstad University, Lars Ola Nilsson, lars_ola.nilsson@hh.se

Kristianstad University, Martin Persson, martin.j.persson@hkr.se

Lund University, Anneli Wiklander, anneli.wiklander@fs.lu.se

Malmö University, Rebecka Kucer Wallin, rebecka.kucer.wallin@mau.se

Swedish University of Agricultural Sciences, Karl Jäghagen, karl.jagham@slu.se

Rickard Eksten, Brussels representative & Senior EU Policy Officer
rickard.eksten@fsi.lu.se, +32 (0) 470 57 39 12

Nordic House, 1st floor, Rue du Luxemburgstraat 3

www.larosatensyd.se | [@LarosatenSydEU](https://twitter.com/LarosatenSydEU)



Kristianstad
University
Sweden

